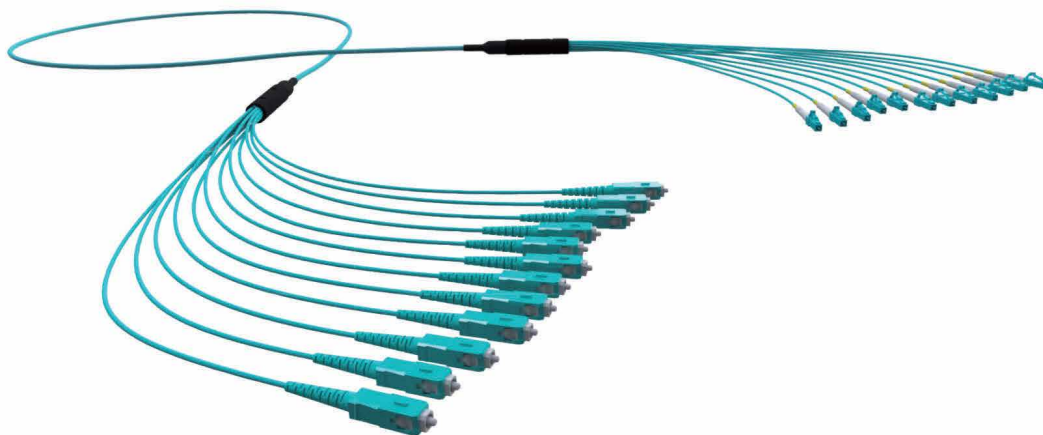


## FIBER OPTIC ASSEMBLY: INDOOR PRETERMS



Codecom Indoor Preterms offers quick and cost effective installation within an indoor environment or intrabuilding premise.

Our indoor preterms are available in Microcore, Tight Buffer and Breakout cable options with special designed modules to breakout individual fibers.

We manufacture preterms with superior fiber /cable performance, high quality connectors which offers improved link loss budgets.

### Features

- Conform to IEC, EIA-TIA, and Telecordia performance requirements
- Available in standard Singlemode and Multimode fiber options
- Available in LC, SC, FC, ST and other connector types
- Available with our standard pulling system
- RoHS, REACH & SvHC compliant, Materials Conflict compliant
- Cable jacket available in PVC, LSZH and UL rated material options

### Application

- Telecommunication networks
- Data centers, Co-location DC
- LAN or Campus wide Network
- Broadband network
- Supports upto 100G applications

#### MELBOURNE (Head Office)

1/22 Buchanan Rd Brooklyn  
3012 Victoria Australia  
Phone: +61 3 9314 4055

#### QUEENSLAND

11/53 Casua Drive Varsity Lakes  
4227 Queensland Australia  
Phone: +61 7 5568 0822

#### HONG KONG

Codecom (Hong Kong) Limited  
Unit 503, 5/F, Tower 2, Lippo Centre, 8  
9 Queensway, Admiralty, Hong Kong  
Tel: 852-2861 0811 Fax: 852-2865 4177



info@codecom.com.au  
sales@codecom.com.au  
accounts@codecom.com.au  
[www.codecom.com.au](http://www.codecom.com.au)

## SM CONNECTOR SPECIFICATION

Parameters	Units	Parameters	Units	PC	APC
Insertion loss – Standard	dB < 0.3	ROC -2.5mm	mm	5-30	5-12
Return loss (PC/APC)	dB > 50/60	ROC -1.25mm	mm	5-30	5-12
Insertion loss – Premium	dB < 0.15	Apex offset	µm	0-70	0-70
Return loss (PC/APC)	dB > 55/65	Fiber height	nm	-100 - α	-100 - α
		APC angle	degree	-	7.7-8.3

## MM CONNECTOR SPECIFICATION

Parameters	Units	Parameters	Units	PC	APC
Insertion loss – Standard	dB < 0.3	ROC -2.5mm	mm	5-30	5-12
Return loss (PC/APC)	dB > 28	ROC -1.25mm	mm	5-30	5-12
Insertion loss – Premium	dB < 0.15	Apex offset	µm	0-70	0-70
Return loss (PC/APC)	dB > 28	Fiber height	nm	-100 - α	-100 - α

## ASSEMBLY PERFORMANCE

Mechanical Properties	Criteria	Effect	Standard
Mechanical endurance	500 mating	<0.2 dB change	IEC 61300-2-2
Vibration	10-55 Hz, 0.75 amplitude	<0.2 dB change	IEC 61300-2-1
Drop	Drop height 1m, 5 drops	<0.2 dB change	IEC 61300-2-12
Cable retention	Magnitude 90 N	<0.2 dB change	IEC 61300-2-4
Cable torsion	1.5kg-2.5 kg for 2mm-3mm cable diameter	<0.2 dB change	IEC 61300-2-5

## CABLE CHARACTERISTICS

Cable Characteristics	Units	Simplex	Duplex
Cable Material		LSZH PVC	LSZH or PVC
Strength Member		Aramid	Aramid
Crush	N	1000	1000
Operating Temperature	°C	-20 to 70	-20 to 70
Secondary Buffer Diameter (2mm and 3mm)	µm	900+50	900+50
Minimum Bending Radius	mm	10D (installed) 20D (loaded)	10D (installed) 20D (loaded)

### MELBOURNE (Head Office)

1/22 Buchanan Rd Brooklyn  
3012 Victoria Australia  
Phone: +61 3 9314 4055

### QUEENSLAND

11/53 Casua Drive Varsity Lakes  
4227 Queensland Australia  
Phone: +61 7 5568 0822

### HONG KONG

Codecom (Hong Kong) Limited  
Unit 503, 5/F, Tower 2, Lippo Centre, 8  
9 Queensway, Admiralty, Hong Kong  
Tel: 852-2861 0811 Fax: 852-2865 4177



info@codecom.com.au  
sales@codecom.com.au  
accounts@codecom.com.au  
www.codecom.com.au